

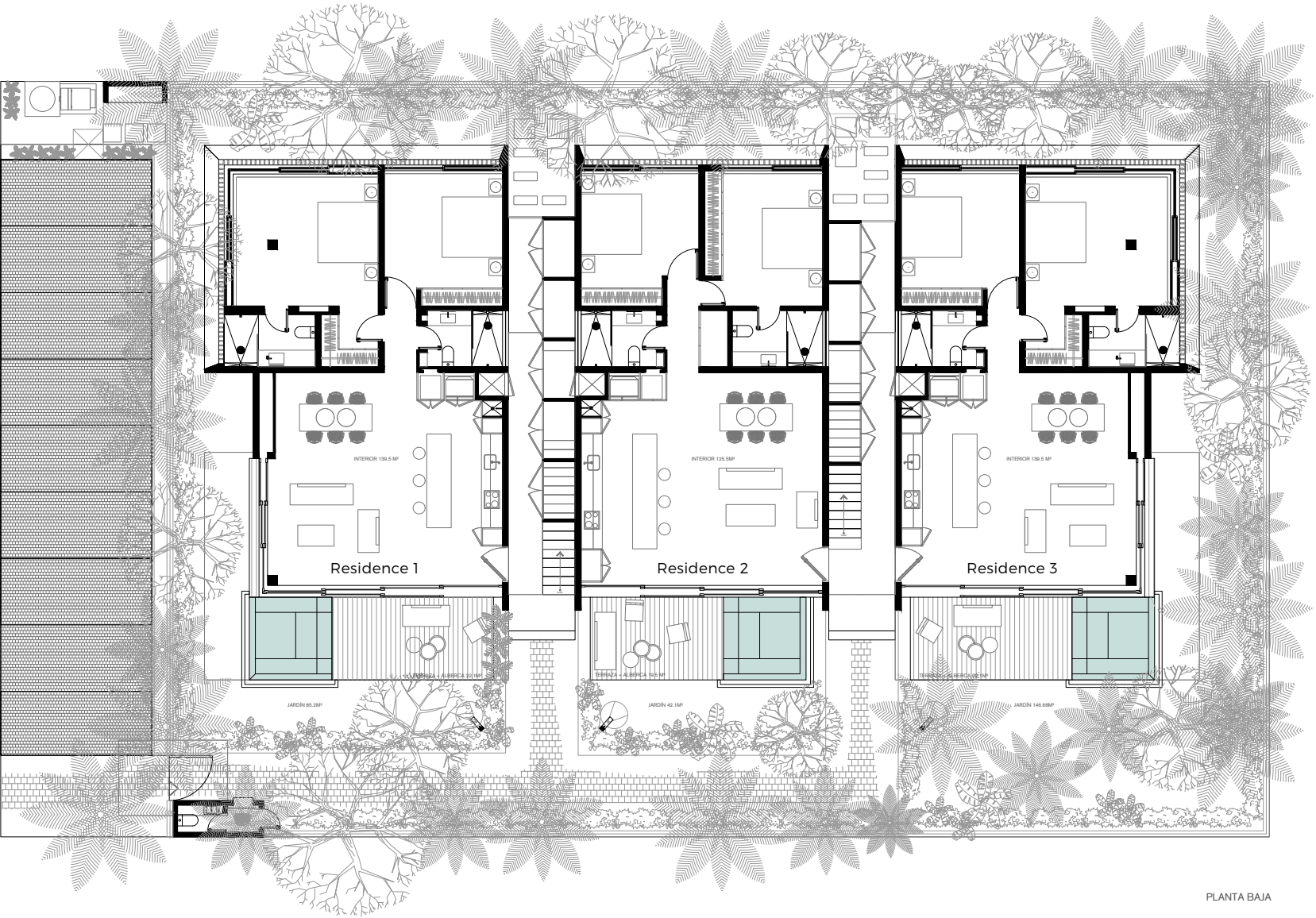


Images shown are for illustration purposes only and is subject to change.

KALI RESIDENCES

Luxury and privacy

Kali, which means “home” in an ancient language, was designed as a serene place where you can connect with nature and your inner self. It consists of 9 exclusive and spacious units of 2- or 3-bedroom residences, where you can enjoy privacy, peace, and natural beauty in an ecosystem surrounded by the richness and splendor of the Mayan jungle.

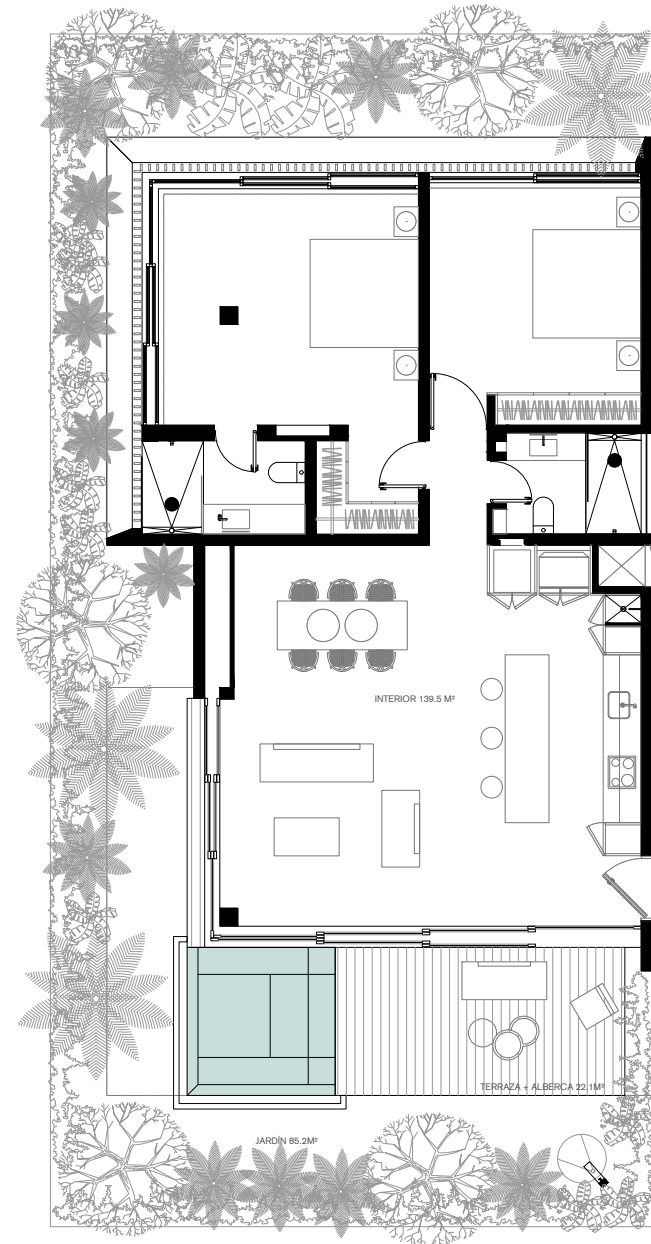


Ground floor - residences 1, 2, 3



Ground floor - residences 1 & 3

Images shown are for illustration purposes only and is subject to change.



Ground floor residences 1 & 3

Ground floor corner units have a wrap around private garden to enjoy the lush landscape from the comfort of your own home. These spacious two bedroom with en-suite bathroom units feature a large shaded private terrace with private plunge pool.

Interior area: (139.5 m²)

Ground floor storage: (2.2 m²)

Terrace: (14.5 m²)

Plunge pool: (7.5 m²)

Garden: (85.2 m²)

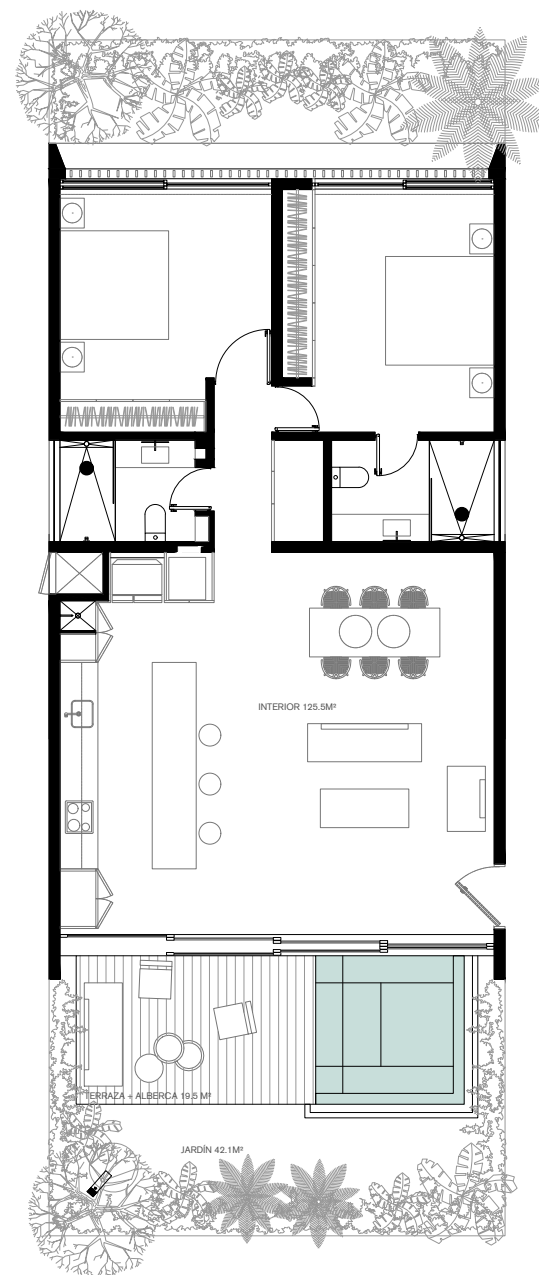
Total area: (249 m²)





Ground floor - residence 2

Images shown are for illustration purposes only and is subject to change.



Ground floor residence 2

The ground floor middle unit features two private gardens: one opens to the living area with both terrace and private plunge pool; and one private garden opening to the bedrooms. This two bedroom with en-suite bathrooms and open living / dining / kitchen area offers an efficient floor plan, making it a great option for the price.

Interior area: (125.5 m²)

Ground floor storage: (2.2 m²)

Terrace: (12 m²)

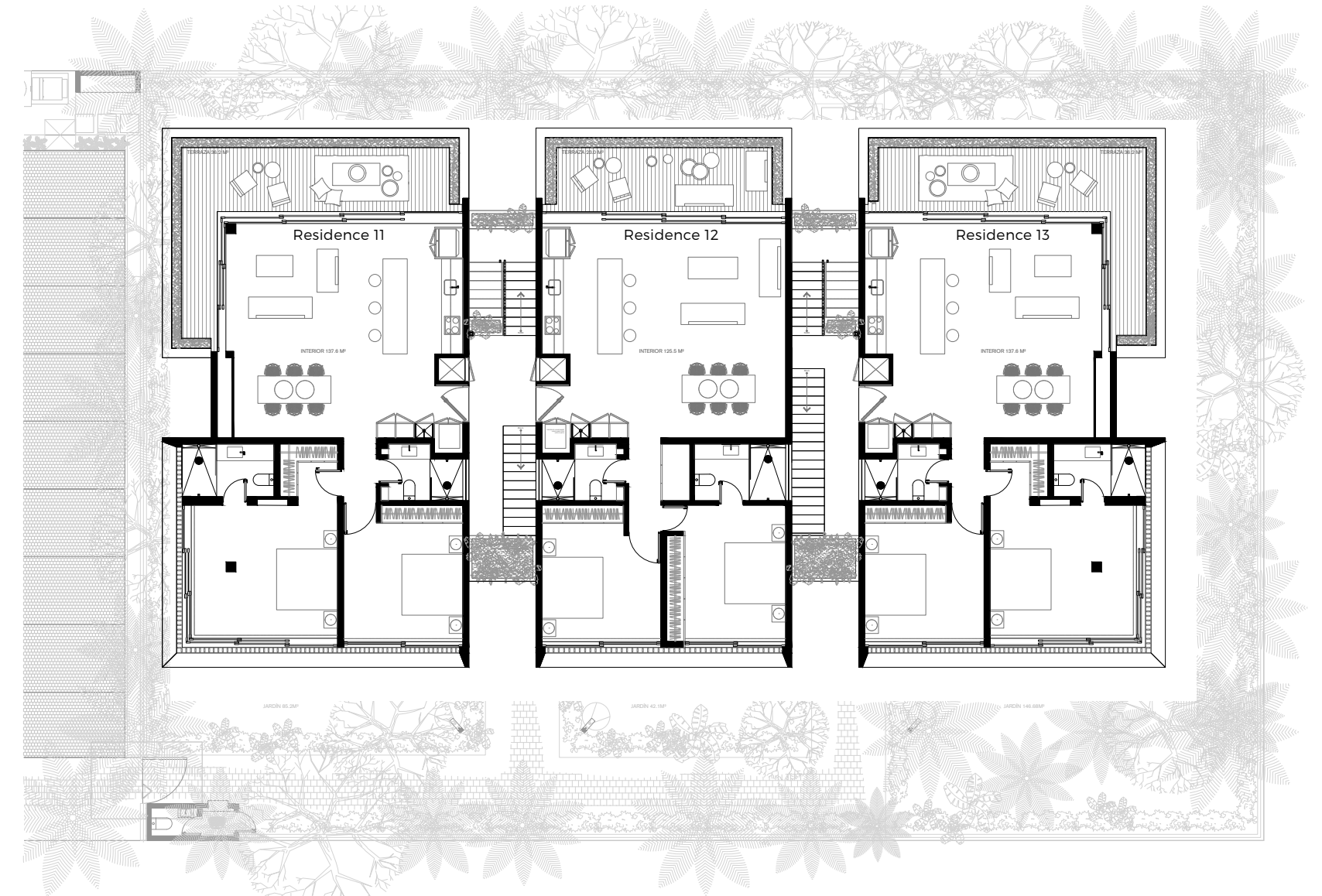
Plunge pool: (7.5 m²)

Garden: 42.1 m²)

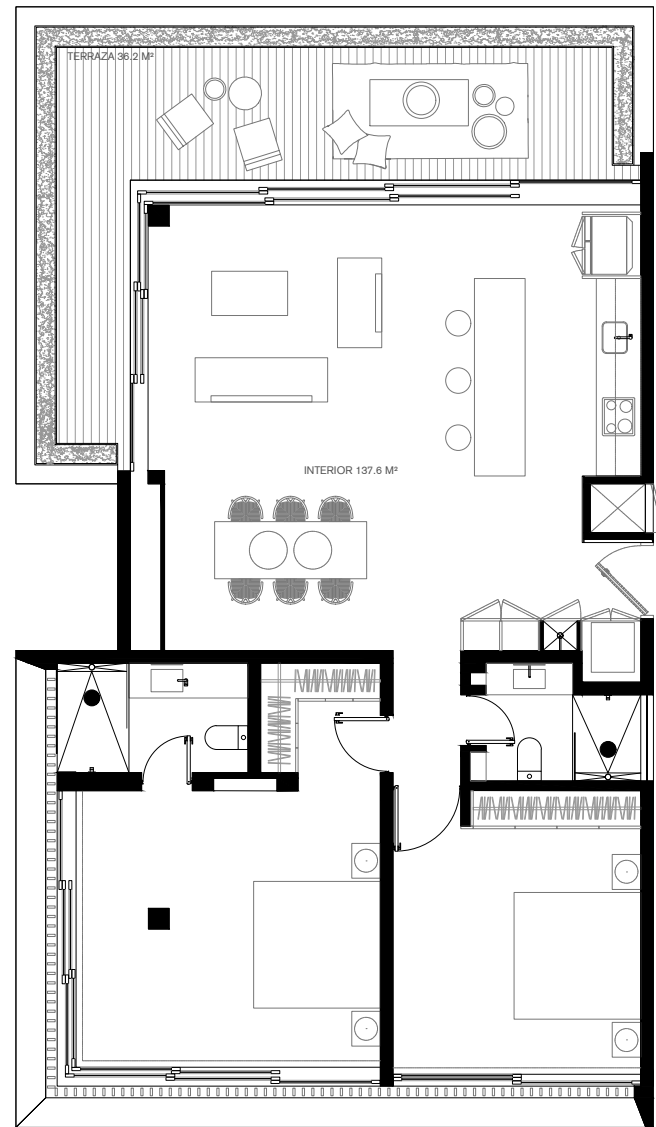
Total area: (189.3 m²)



S P A C I O U S &
C O M F O R T A B L E



Level one - residences 11, 12, 13



Level one residences 11 & 13

The first level corner units have a large wraparound terrace, with views over the surrounding jungle. The terraces will be conveniently wrapped with planters and greenery to protect each unit's privacy.

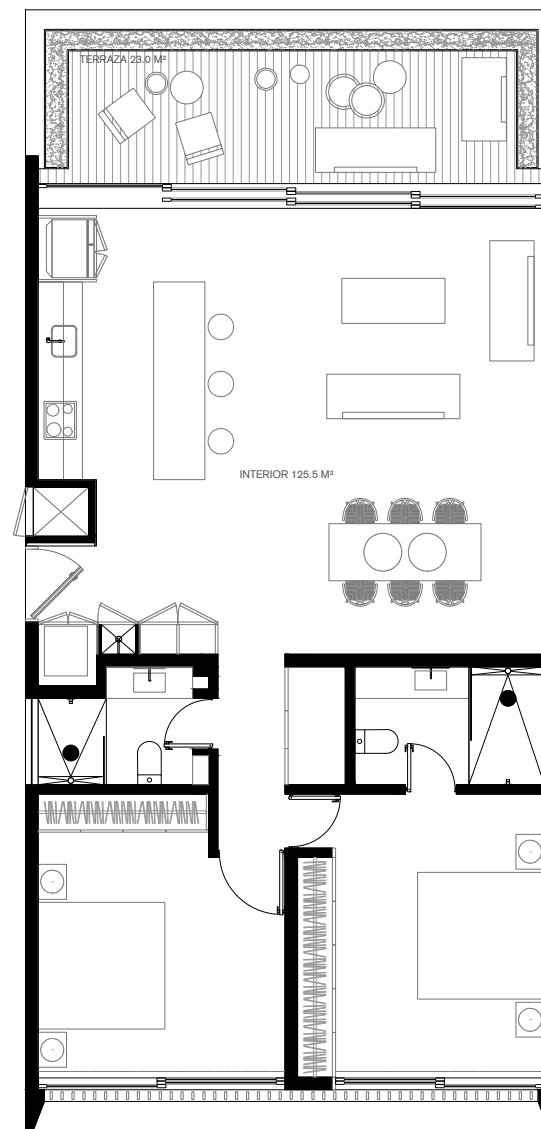
Residences 11 and 13 have two bedroom with en-suite bathrooms and open living / dining / kitchen area opening directly to the terrace.

Interior area: (137.6 m²)
Ground floor storage: (2.2 m²)
Terrace: (36.2 m²)
Total area: (176 m²)



Level one - residence 12

Images shown are for illustration purposes only and is subject to change.



Level one residence 12

The first level middle unit features two bedroom with en-suite bathrooms and open living / dining / kitchen area opening directly to a well-sized terrace. The terrace is conveniently wrapped with planters and greenery for privacy, prolonging the unit's green views.

Interior area: (125.5 m²)

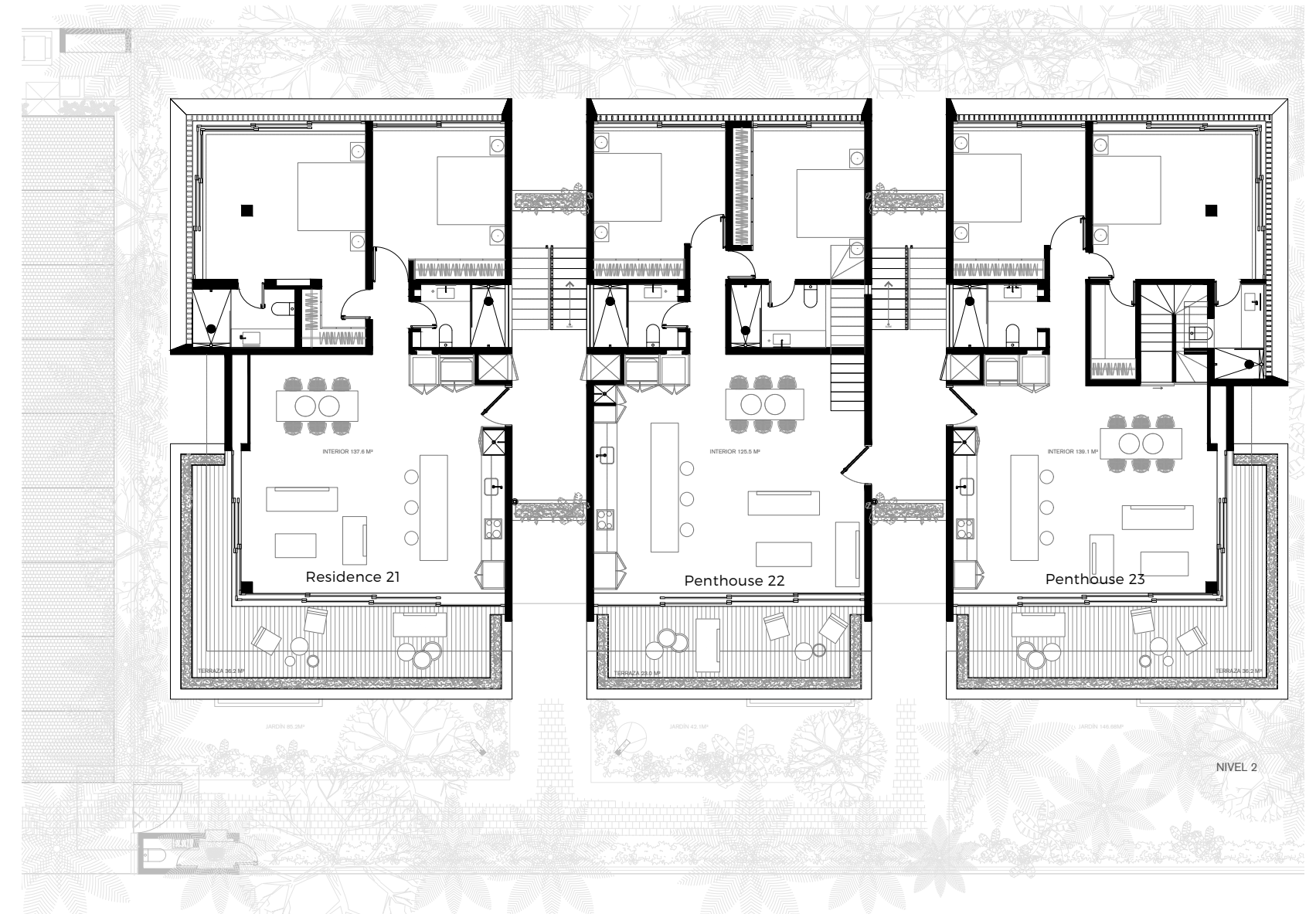
Ground floor storage: (2.2 m²)

Terrace: (23 m²)

Total area: (150.7 m²)



NATURE
INSPIRED

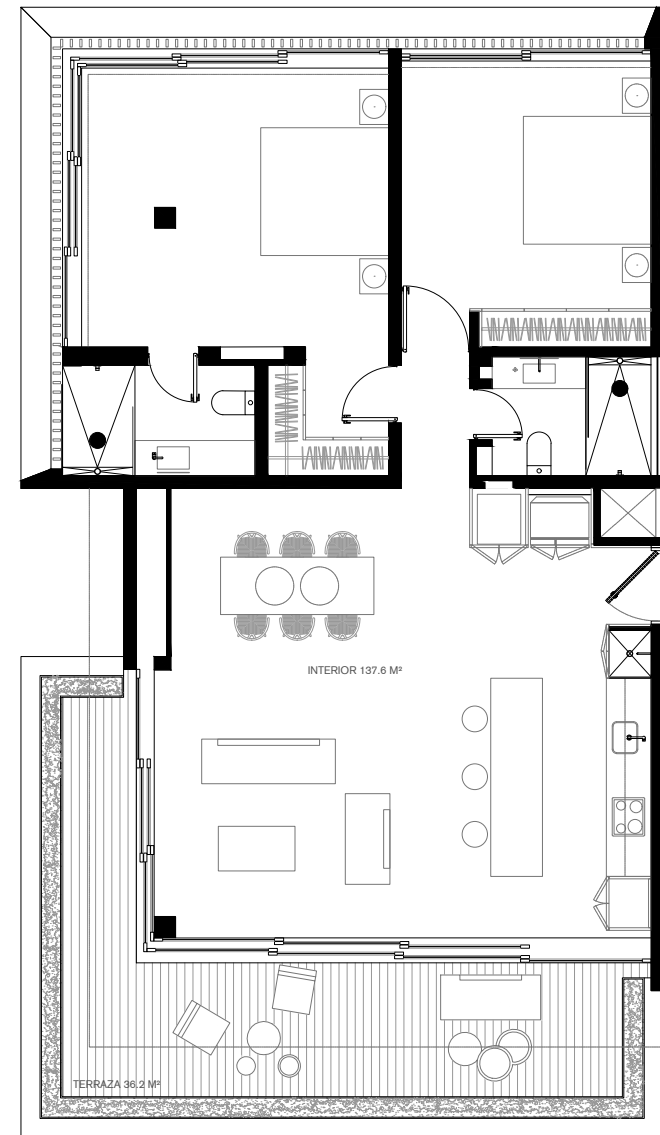


Level two - residence 21, penthouse 22, penthouse 23



Level two - residence 21

Images shown are for illustration purposes only and is subject to change.



Level two residence 21

The second level corner unit has a large wraparound terrace and tree top views. The terrace features a wraparound planter with tropical greenery providing privacy.

Residence 21 has two bedroom with en-suite bathrooms and open living / dining / kitchen area opening directly to the terrace.

Interior area: (137.6 m²)

Ground floor storage: (2.2 m²)

Terrace: (36.2 m²)

Total area: (176 m²)





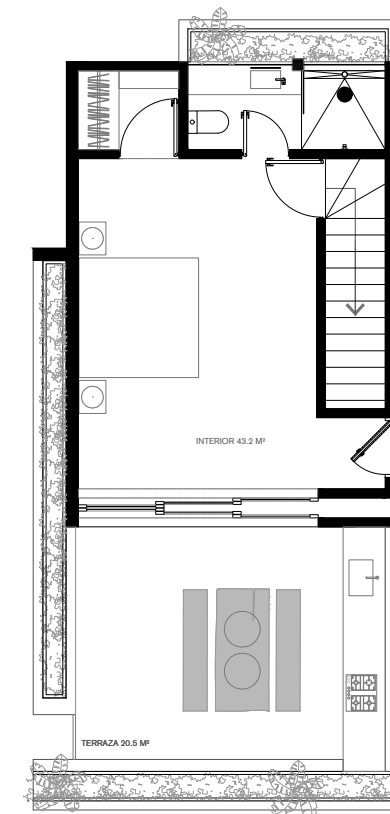
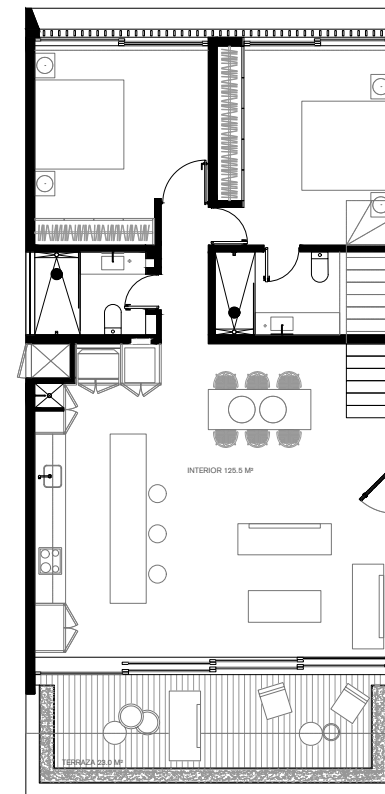
Level two - penthouse 22

Images shown are for illustration purposes only and is subject to change.



Level two residence 22

This beautiful penthouse is developed over two floors and offers two bedrooms with en-suite bathrooms and social areas on the main level, and a lock-off third bedroom with a spacious outdoor terrace, outdoor lounge and barbecue on the rooftop.



The rooftop has access to the main pool and social areas of the building.

Interior area: (168.7 m²)
Ground floor storage: (2.2 m²)
Terrace: (50.5 m²)
Total area: (221.4 m²)





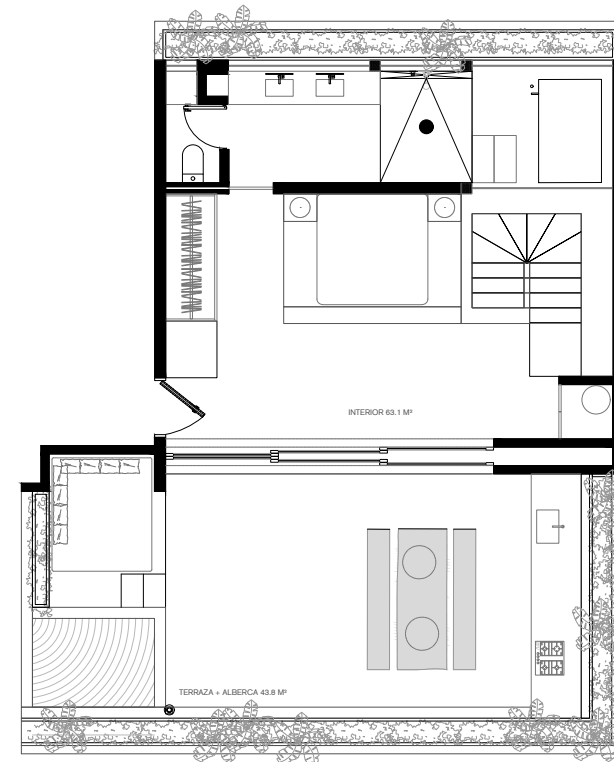
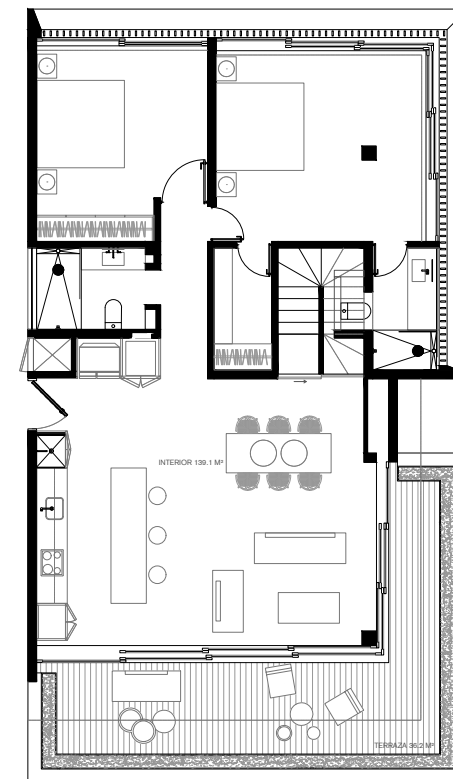
Level two - penthouse 23

Images shown are for illustration purposes only and is subject to change.



Level two residence 23

The most spacious residence. The main penthouse is developed over two floors and offers two bedrooms with en-suite bathrooms, social areas and a wraparound terrace on the main level, and a lock-off third bedroom with a luxurious en-suite bathroom, outdoor terrace with lounge, plunge pool and barbecue on the rooftop.



Interior area: (202.2 m²)
Ground floor storage: (2.2 m²)
Terrace: (96.9 m²)
Pool: (4.8 m²)
Total area: (306.1 m²)





Level three
Kali pool & lounge

The rooftop features a large pool and lounge for the guests to enjoy. The west facing view is the most perfect place to enjoy the incredible Tulum's sunsets while sipping on a cocktail, cooling off from a busy day or simply enjoying the astonishing views over the tree tops.

Images shown are for illustration purposes only and is subject to change.

